

GamePit^{PRO} by jamk

INSTRUCTION FOLDER / ENGLISH

WELCOME TO GAMEPIT!

Address

Jamk University of Applied Sciences
GamePit Pro, AP05
Rajakatu 35
40200 Jyväskylä

You can order food directly on site via Wolt or Foodora! Add delivery to A3 door to your order notes.

The smoking place can be found in the middle of the parking area under a lamppost. If necessary, 2 umbrellas are available at the GamePit interior door to borrow during the reservation.

RAJAKATU 35, JYVÄSKYLÄ

Pääkampus Main Campus

Pysäköinti | Parking

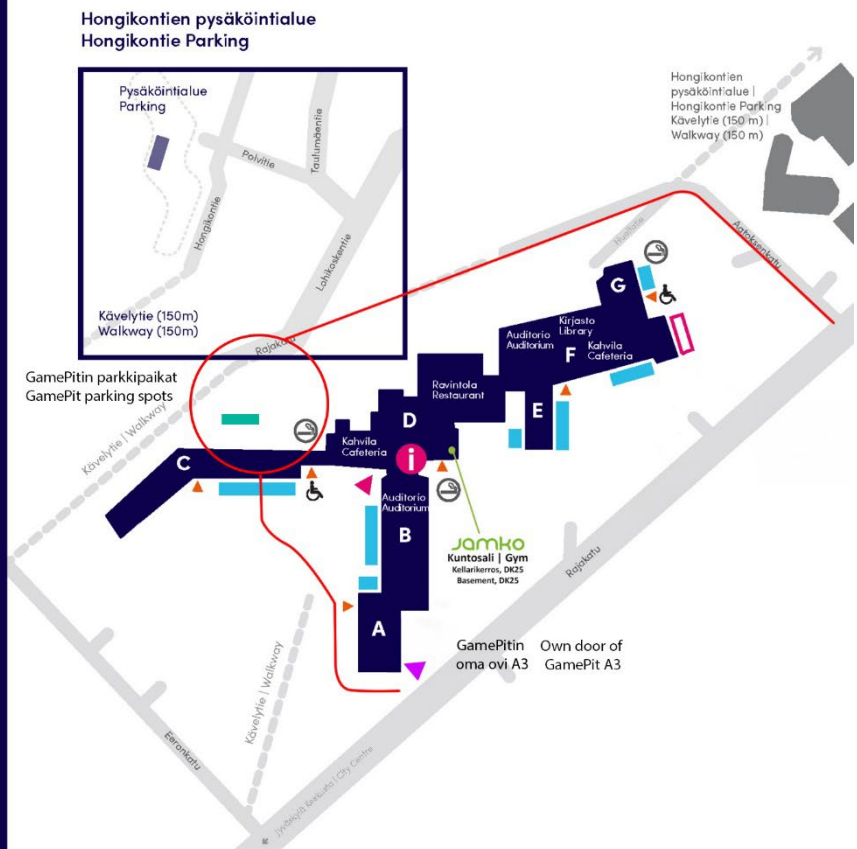
- henkilökunta | staff
- vieraat | guests
- opiskelijat | students
- inva | disabled parking
- kiekkopaikka | time limited parking
- polkupyörät | bikes
- varatut paikat | reserved parking

Muut merkit | Other markings

- pääsisäänkäynti | main entrance
- vaihtoehtoinen sisäänkäynti | optional entrance
- invaliisika | handicap access
- info
- tupakkapaikka

Vierailija, haethan pysäköintiluvan lähimmästä infosta | Guest, please get the parking permit from nearest information desk

jamk | Jyväskylän ammattikorkeakoulu
University of Applied Sciences



CONTACT INFORMATION

In problem situations and maintenance questions, please contact our staff. The list is divided according to areas of responsibility, please reach our staff primarily by calling. The persons are listed in the order of contact.

IN AN EMERGENCY, ALWAYS REMEMBER TO CALL 112!

Facility Managers

Elmo Hämäläinen

Phone number 0504119162

Email address elmo.hamalainen@jamk.fi



Veerti Pekonniemi

Phone number 0504414392

Email address veerti.pekonniemi@jamk.fi



Janitors

Mika Liedes

Phone number 0405570822

Email address vahtimestarit@jamk.fi



Securitas security services (in case of disturbances)

Phone number 020 491 2600

SAFETY PLAN

Your safety is our top priority, so please read the attached safety plan carefully. Please also read the rescue plan attached to this folder, which includes the emergency exits and the locations of the fire extinguishing equipment in the facility.



IN AN EMERGENCY, ALWAYS REMEMBER TO CALL 112!

EQUIPMENT LIST

GamePit facility

- PC setups for 12 + 6 persons, extra setups available for an extra fee
- Console corner:
 - Two PS4 Pro consoles
 - Two 27" Voxicon screens
 - 2 x 65" TV + home theater system
- Meeting and lecture facility:
 - Large movable TV
 - HD-level projector and projection screen
 - Genelec sound system
 - Movable tables and chairs
- Accommodation:
 - Two sleeping areas, each with 2 bunk beds and 2 electric air mattresses
 - Accommodation can also be expanded for 12 + 6 people
- Red Bull refrigerator
 - Drinks will be billed separately according to consumption
 - Lower shelves of the refrigerator are free to use
- Basic equipped kitchen in room AP03
- Shower and toilet adjacent to the kitchen area
- Own entrance through door A3

Kitchen area

- Two coffee makers
- Kettle
- Refrigerator
- Microwave
- Water point and sink
- Dishwasher
- Tableware and utensils
- Mixed and bio waste bin

GENERAL INSTRUCTIONS

Own entrance through door A3

- Access to the gaming area is through door A3 using an access card and the code marked on the card.
- Reservation starts at 9:00 in the morning, check-out by 24:00 (does not apply to overnight bookings).
- Do not prop the exterior doors open. After two minutes of being left open, a security company will be called, and the customer will be invoiced (€50 + VAT).

Access during the reservation

- Access between the gaming area and room AP05 is permitted. Remember to have the access card to pass through the dividing door!
- Unauthorized access outside the premises triggers an alarm to the security company during nighttime, resulting in an invoice to the customer (€50 + VAT).
- Exceptions regarding access outside the premises are agreed upon separately.

Parking

- Loading and unloading vehicles is allowed at the GamePit entrance for 15 minutes.
- Parking is available behind Wing C in the designated staff spaces according to the attached map. No parking permit is required for these spots.
- Parking behind Wing C is allowed from Friday 2:00 PM to Sunday 11:59 PM.
- Any exceptions to parking regulations (e.g., events lasting over the weekend) will be communicated separately.

Eating and drinking at gaming stations is prohibited!

- Customers are responsible for damages caused by themselves, such as spills onto equipment.

Waste Management

- General waste in mixed waste bins, several bins are located around the gaming area and in the kitchen area.
- Empty bottles into the large orange waste bin.
- Empty cardboards into the green waste bin in front of the console area.
- Biodegradable waste into the recycling bin in the kitchen area.

DEPARTURE CHECKLIST

When leaving the gaming space after your rental period, the space should be returned to the same condition as it was when you arrived. This will facilitate cleaning and ensure seamless rental for the next customer.

Equipment Check

1. Log out of all personal accounts, including from the browser.
2. Remove your personal accessories and reconnect GamePit's devices back to their places.
3. Turn off the computers.
4. Adjust the standing desks to sitting position.
5. Place the chairs against the tables.

Sleeping Area Check

1. If you used air mattresses, deflate them.
2. Pack the mattresses back under the beds.
3. Remove your own sheets and beddings.
4. Make the beds.
5. Leave the sliding doors of the sleeping areas open.

Kitchen Check

1. Take the dishes from the rooms to the kitchen.
2. Wash the used dishes.
3. Place the dishes back into the cabinets.
4. Dispose the waste in their designated bins.
5. Recyclable bottles into the orange bottle bin in the room.

General Cleanliness Check

1. Close open windows and adjust curtains as they were upon arrival.
2. Close the lids of the trash cans. If the bins are too full, ask the caretaker for more trash bags.
3. Ensure all your personal devices are with you.
4. Turn off the lights in the space. The switches for the LED lights are at different ends of the space.

RETURN ACCESS CARDS TO THE MAILBOX NEAR THE ENTRANCE!

REMEMBER TO RETURN PARKING PERMITS TOO!

WIFI

GamePit Wifi

Name: JAMK-guest

Password: jamk2018

USING COMPUTERS

- When starting or restarting the computer, wait until the game center system interface appears on the desktop.
- Do not log out of the game center system from the top right corner. If this happens, restart the computer.
- When launching a game for the first time, it may open slowly as the computer checks the installation. The game will load faster after this initial launch.
- If you want to install your own software, install it on the C: drive rather than the E: network drive. Installations on the E: drive are slow and will not persist after a restart. Set the installation location to the C: or D: drive in programs like Steam.
- When finishing your session, please remember to log out of any applications you used (Steam, Discord, FaceIT, etc.). The staff will also check the computers afterward.
- A restart can resolve most issues. You can restart the computer by pressing the smaller reset button next to the power button.
- You can shut down the computer by pressing the power button directly or selecting "Shut Down" from the start menu.

PC GAMES

PC games have been installed and updated on the computers in advance. It is recommended to use your own personal gaming accounts for playing. If necessary, you can also use GamePit's gaming accounts, which are available upon request during the guidance.

Steam

Counter Strike 2
Dota 2
Tom Clancy's Rainbow Six Siege
Apex Legends
Age of Empires 2 HD
Aimlabs
Brawhalla
Crab Game
THE FINALS
Garry's Mod
Halo Infinite
Halo: The Master Chief Collection
Just Act Natural
Knockout City
Left 4 Dead 2
Old School Runescape (also in Runelite)
Overwatch 2 (also in Battlenet)
Payday 2
Quake Live
PUBG: BATTLEGROUNDS
RISK: Global Domination
Runescape
SMITE
Speedrunners
Splitgate
Star Wars: Battlefront 2
Titanfall 2
Tom Clancy's Rainbow Six Siege
Trine 1, 2, 3
Valheim
Warframe
Wolfenstein: Enemy Territory
Wolfenstein: The New Order
Worms Armageddon
Worms Ultimate Mayhem

Battle.net

Overwatch 2 (also in Steam)
Hearthstone
World of Warcraft + classic
Starcraft 1, 2
Call of Duty Warzone 2.0
Diablo 3
Heroes of the Storm

Riot Games

League of Legends
Teamfight Tactics
Valorant

Ubisoft Connect

Tom Clancy's Rainbow Six Siege

Muut

Runelite (also in Steam)
Jagex Launcher
Pro Pilkki 2
MTG Arena

Epic Games

Fortnite
Fall Guys
Rocket League
Godlike Burger

Battlestate Launcher

Escape from Tarkov

Game Center

World of Tanks

PC APPLICATIONS AND PROGRAMS

Spotify
Blender (also in Steam)
Gimp 2
FacelT/AC (local installation)
Esportal (local installation)
OBS
Streamlabs
Discord
Teamspeak 3
Blitz

CONSOLE GAMES

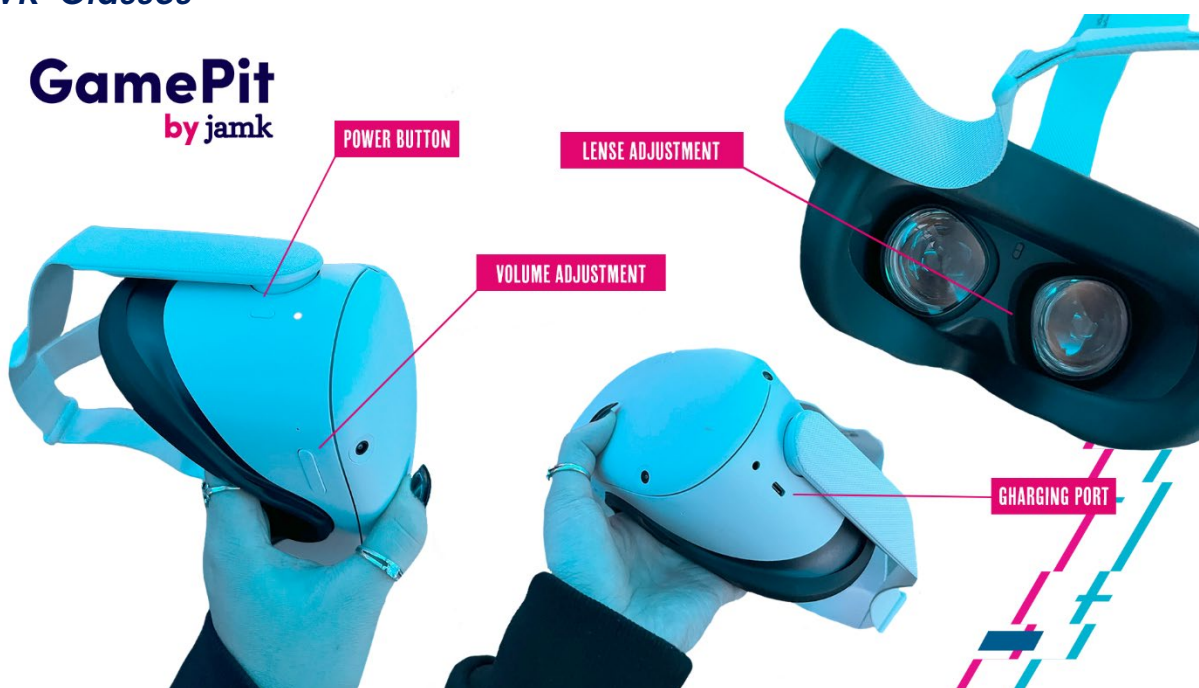
PlayStation 4 games have been downloaded onto the consoles digitally. Some installations have been made only on one of the consoles, and this is indicated in the accompanying game list.

NHL 20
FIFA 20
Apex Legends
Fortnite
Fall Guys
Rocket League
Brawhalla
Crash Bandicoot 4: It's about time (PS4 – console 2)

VR GADGETS

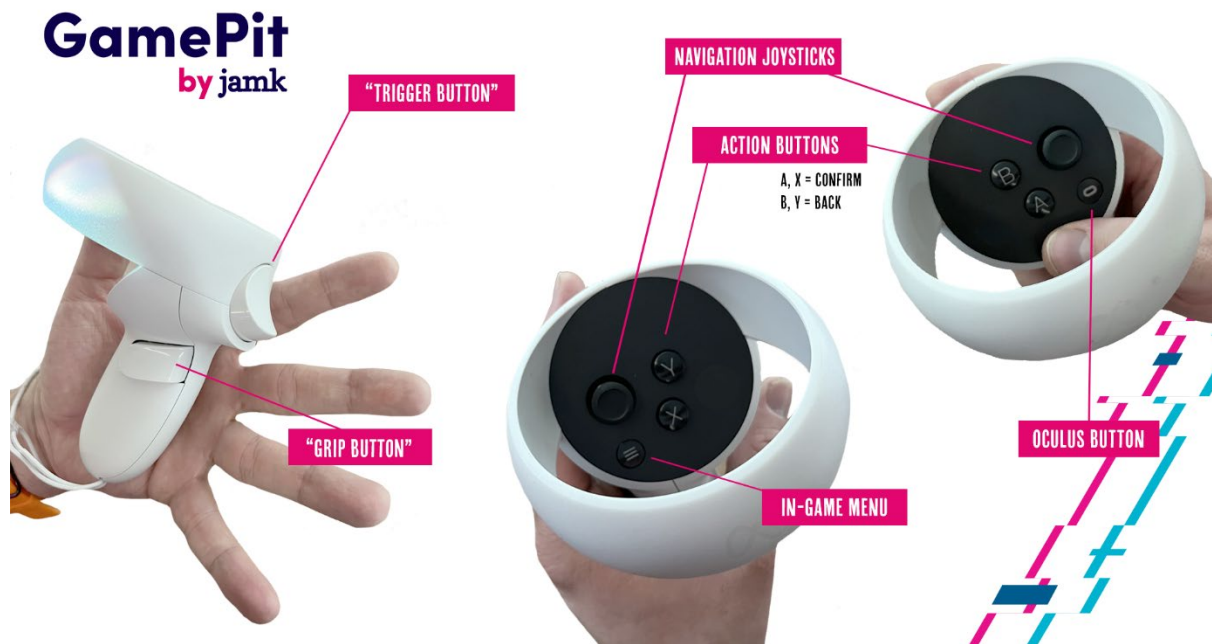
You have access to Meta Quest 2 virtual reality headsets, and you can find the basic operations in this manual. Please make sure that the sets of glasses you use remain consistent, and do not mix controllers and glasses belonging to different sets. Each part of the glasses set is labeled and named.

VR-Glasses



- It's a good idea to charge the glasses whenever they're not in use! The charging cable and adapter can be found in the gray storage box for the glasses.
- In the storage box, there is also a separate plastic spacer, which should be used if the player needs to wear glasses.
- Adjust the glasses to fit the player using the head straps. You can also adjust the distance of the lenses from the inside of the glasses by clicking the lenses.
- Please clean the black rubber parts of the glasses after use with a disinfectant wipe!

Controllers



- Wrist straps should be used for safety reasons!
- Menu navigation is mainly done by pointing and pressing the trigger.
- The Oculus button on the right controller returns the user to the main menu.
- You can access the in-game menu by pressing the menu button on the left controller.

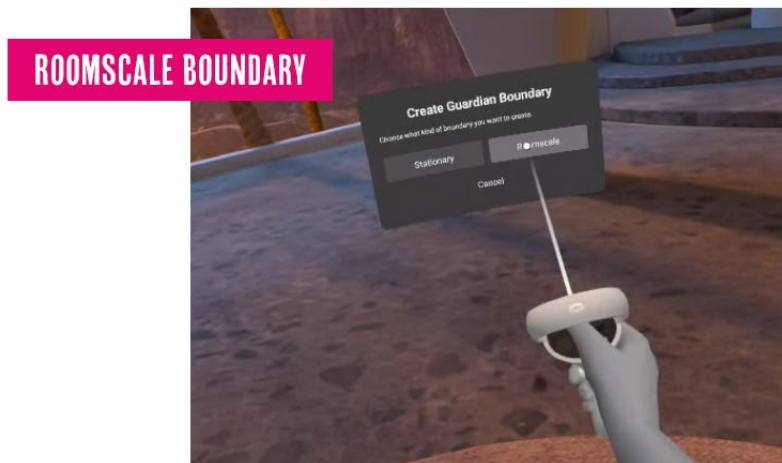
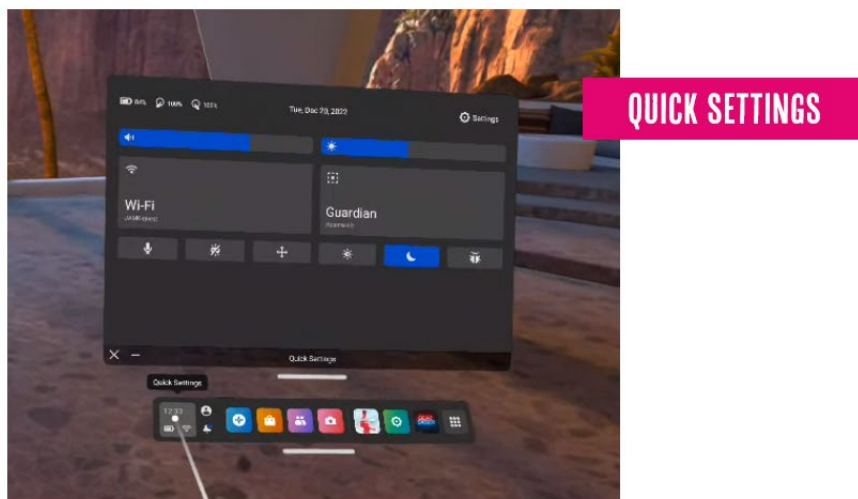
Using the VR Glasses

- The logged-in user on the device is GamePitPro 1/2/3/4; do not log out the user!
- If the device prompts for a user profile when starting, the selection should be skipped.
- Do not log in with personal user accounts on the glasses.

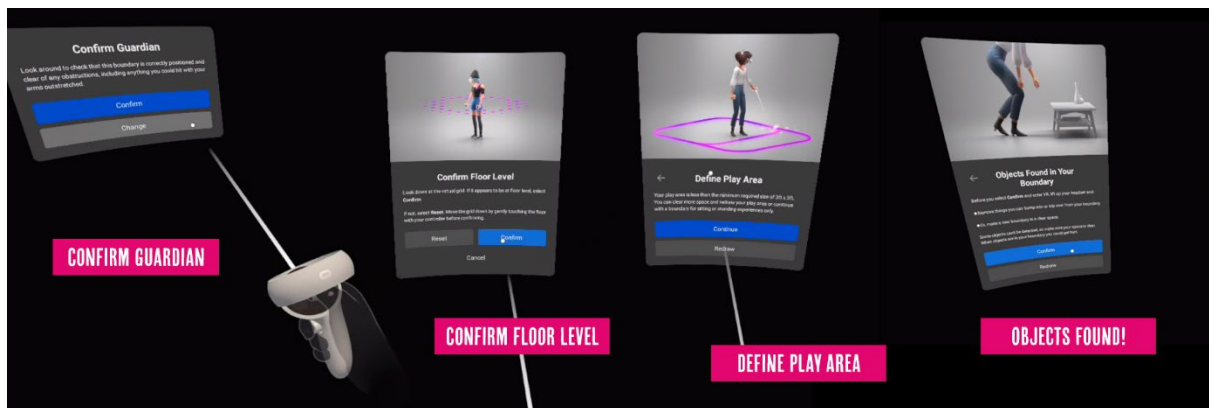
Drawing the play area

It's recommended to designate a spacious area with approximately 2 x 2 meters of free space for the play area. The glasses offer either a stationary boundary, which creates a fixed play area of 1 x 1 meter around the player, or a self-drawn roomscale boundary. We recommend that the player draws the roomscale boundary with the controller in a self-determined area.

- Select "Quick Settings" from the left side of the main menu.
- From the menu that appears, select "Guardian."
- Choose "Roomscale" from the guardian selection box.
- Confirm the floor level by touching the floor with the controller or adjusting the floor level using the controller's joystick.



- Draw the play area around yourself by pressing the trigger. If there are obstacles in the area, you will receive a separate notification about it
- If you want to define a completely new play area, step out of the existing area and select "Room Scale Boundary."
- If you need to change the existing play area, navigate to Quick Settings by pressing the leftmost icon in the menu bar and select "Guardian" from there.



Selecting the application



- The application menu opens from the right side of the main menu behind the gray grid button.
- You can choose from four complete games and a few demos.
- Please do not add or remove applications from the library on your own!

What should we play today?

Beat Saber

A rhythm game where the player's goal is to collect points and combo moves by hitting approaching musical beats with "lightsabers" to the rhythm of the music. Be prepared to break a sweat while dodging obstacles and mines!

To enable "No Fail" mode, navigate to the menu where songs are selected. When looking to the left, you'll see the option in the menu.

Pro tip: You can find the game tutorial in the main menu behind the question mark icon.

Superhot

An action game where time only moves when the player moves! Throw, punch, grab, and shoot! Overcome challenges and defeat opponents by manipulating time just like in The Matrix.

Wander

Experience Google Maps in a new way! Travel virtually around the world and look around as if you were there yourself.

Pro tip: If the menu obstructs your view, you can hide it by pressing the menu button on the left controller or alternatively the B / Y buttons.

Pistol Whip

A fast-paced VR game combining rhythm gameplay, precise shooting, and quick reflexes. As the player moves forward, enemies appear and must be defeated to the rhythm and beat of the music.

Pro tip: Options such as no-fail mode can be found in the main menu on the left.

Creed: Rise to Glory (Demo)

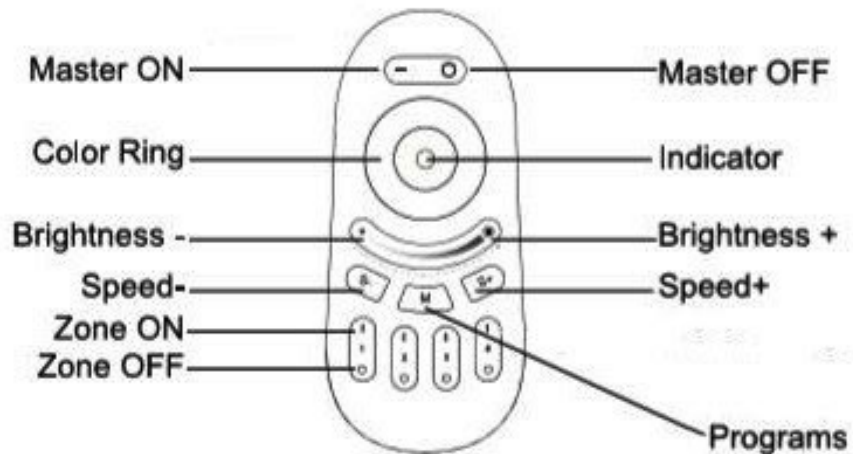
A boxing game based on the Rocky series. Train, fight, and knock out opponents in the boxing ring like Adonis Creed!

Journey of the Gods (Demo)

A first-person action-adventure game that combines puzzles and combat. Solve ancient mysteries and obtain the mystical power of the gods!

MANUAL FOR LED LIGHTS

Function of Keys



Program List

Program 1 (RGBW Fade In Fade Out)

Program 2(Color Flash)

Program 3 (Disco)

Program 4 (Red Color Ramp up and Flash)

Program 5 (Green Color Ramp up and Flash)

Program 6 (Blue Color Ramp up and Flash)

Program 7(Color Change+ Flash)

Program 8 (Fade in and Fade out)

Program 9 (Strobe White)

RENTAL PRICE LIST

For more information, contact esports@jamk.fi or 0504119162 / Elmo Hämäläinen
The facility and equipment are rented in their entirety. Prices include 25,5 % VAT.

3-hour reservations	
12 setups	130 €
12 + 6 setups	180 €
Extra hours	
12 setups	35 €
12 + 6 setups	50 €
One day from 9am to 12pm next day (no accommodation)	
12 setups	450 €
12 + 6 setups	600 €
Weekend including accommodation from fri 09am to sun 10pm (inc. cleaning fee 100 €) 12 setups	1200 €
Extra setups as a part of weekend reservation (max. 6 setups)	50 € / pers / reservation
Extra days as a part of weekend reservation	250 € / day
Esports instructor	
Mon-fri (8am to 4pm)	60 € / h
Mon-thu (4pm to 10pm)	90 € / h
Meta Quest 2 virtual headsets (1-4 pcs available)	50 € / pcs

GamePit reserves the rights to price changes.

Cancellations made within 7 days will be charged 50% of the reservation price.

DISCOUNTS

Student Discount

- The student discount is valid for secondary school students and university students regardless of the educational institution.
- By showing a valid student card when making a reservation, you will receive a 20% discount off the price of your reservation.
- The student discount can be used for all services mentioned in the price list (except for e-sports coaching).

Staff Discount

- The staff discount is intended for Jyväskylä University of Applied Sciences (JAMK) staff members.
- By showing a JAMK staff ID card when making a reservation, you will receive a 20% discount off the price of your reservation.
- The staff discount can be used for all services mentioned in the price list (except for e-sports coaching).

3 + 1 – Bonus System

- By making 3 bookings within a year, you will receive one additional booking of the same price for free.
- The free booking must be made within 6 months of your third booking.
- Ask for more details about our bonus offers!

Partnership Discount

- We offer our partners a 20% discount off the list prices of the GamePit Pro gaming space. (This also applies to the 3 + 1 bonus offer)
- Extra days in connection with weekend bookings: €125 (normal price: €250)

RED BULL -DRINKS

Red Bull products will be checked by staff after the reservation and added to the bill according to consumption.

- Can Cooler - Free Tastings in the Cooler
Free tastings in the can cooler based on the number of people, *only for weekend bookings*
- Red Bull Drinks from the Large Cooler - All Flavors €2.30 each

Drinks can also be purchased via card payment.

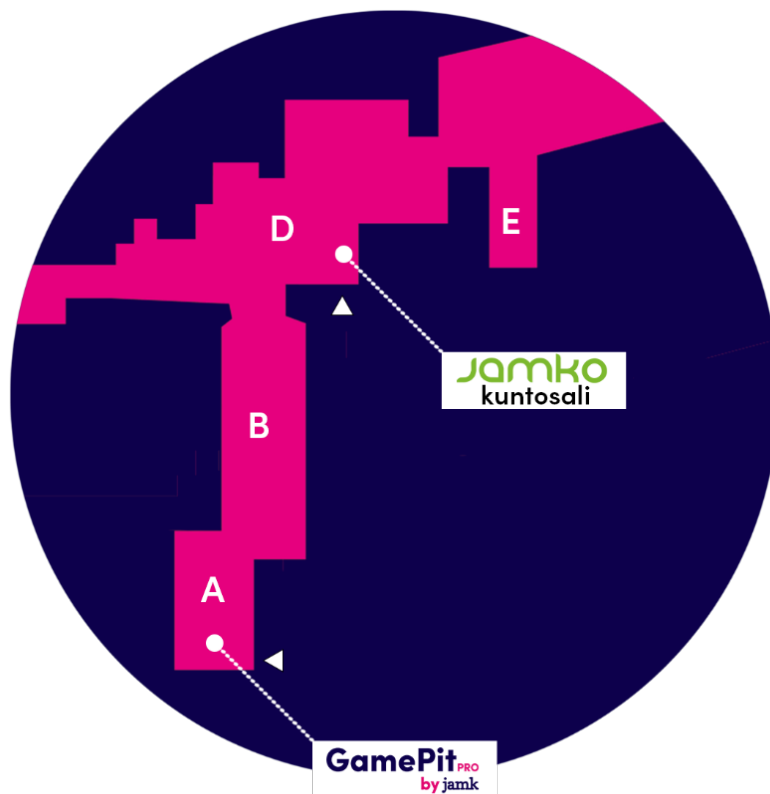
Ask for more payment options from the venue manager when you arrive at the gaming space!

GYM

The JAMKO gym is in the basement of wing D, in room DK25.

Access to the gym is through the outdoor entrance using the GamePit access card labeled "Special Card" when making a reservation. Inquiries about gym usage should be made at the time of booking or upon arrival at the venue.

Please follow the instructions found in the gym and ensure to leave the premises tidy when you leave!



Gym Opening Hours

Monday to Friday: 8:00 AM – 8:00 PM

Saturday: 8:00 AM – 2:00 PM

The gym is closed on public holidays and when the campus is closed.

CAFE AND RESTAURANT SERVICES

Café Curve serves in the main lobby of the Rajakatu campus as follows:

Breakfast on weekdays: 7:45 AM - 10:00 AM

Café counter on weekdays: 9:00 AM - 5:00 PM

Café counter on Saturdays: 9:00 AM - 2:30 PM

Lunch on weekdays: 10:30 AM - 6:00 PM (€8.45 / person)

Lunch on Saturdays: 11:00 AM - 12:30 PM (€8.45 / person)

Access to the café is through the outdoor GamePit Pro A3 door, entrance through the main doors.

Please do not walk through the campus interior to access the café!

Café Curve is closed on public holidays and when the campus is closed.

Catering

Ask for a catering service quote when making your reservation. We offer breakfast, lunch, and dinner options delivered directly to the GamePit gaming space if needed.